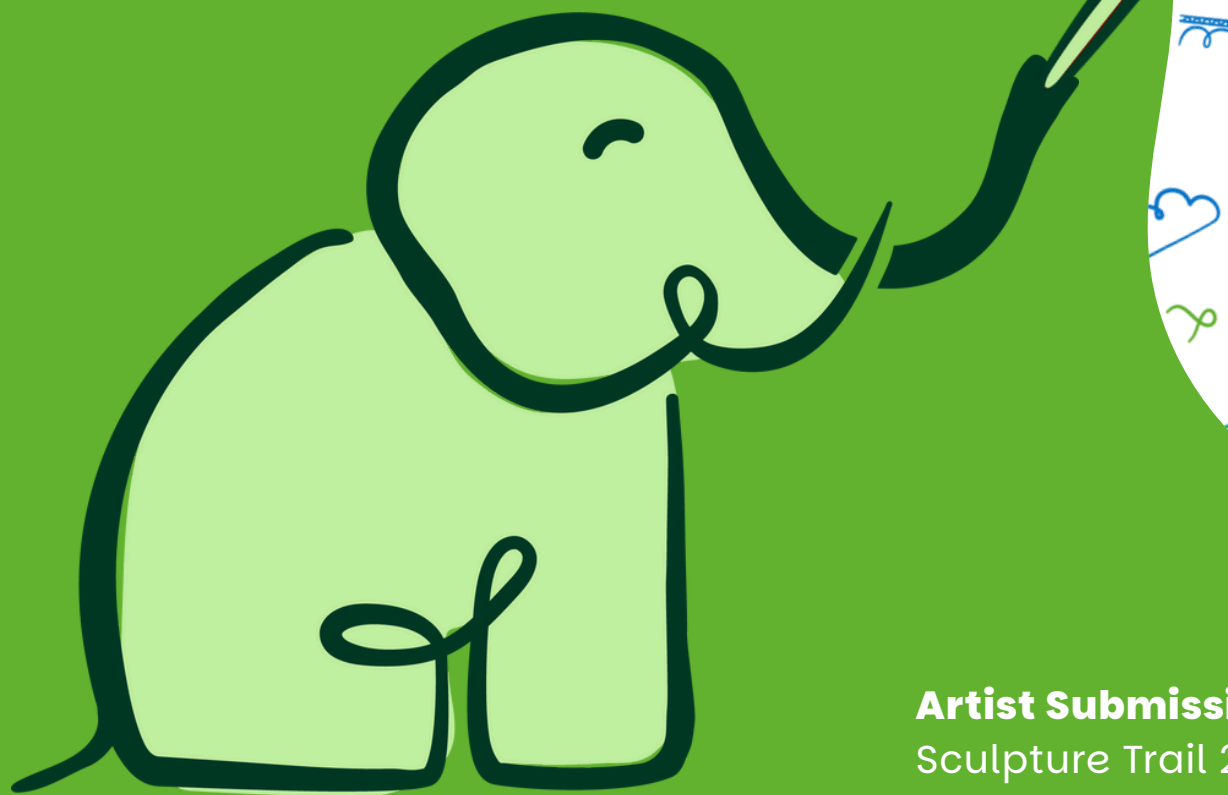


# TRUNKS ACROSS THE THAMES



We are looking  
for **artists** to  
**join the herd!**

**Artist Submission Pack**  
Sculpture Trail 2026

Created by



Thames hospice

Be a part of  
something

**BIG**

coming to Slough  
and Windsor in  
Summer 2026

Trunks across the Thames  
is Thames Hospice's very first art  
trail which will see businesses,  
schools, community groups and  
artists unite to create a free, fun,  
family-friendly trail of discovery  
for the local community to  
explore and enjoy.



## Prepare for a monumental **STAMPEDE!**

From July–September 2026, for nine weeks, our herd of individually designed magnificent elephant sculptures will bring vibrancy, colour and creative artistry, transforming the streets, parks and open spaces of Slough and Windsor into a glorious open-air gallery.

The herd will then gather for a showcase you won't want to miss at our farewell event! This is your chance to celebrate each unique sculpture before they head to their forever-homes at the big auction, raising vital funds for Thames Hospice.

Be a part of this wonderful event, helping us to deliver significant economic, social and cultural benefits to Slough and Windsor, all while supporting your local Hospice.

**ARTISTS,  
WE NEED  
YOU!**

**Are you up to the tusk?**

We are looking for talented artists to create show-stopping designs and transform these jumbo canvasses into vibrant works of art!

# Brought to you by Thames Hospice...

Thames Hospice is absolutely thrilled to work together with Wild in Art to deliver our very first extraordinary public art trail and cultural event in Slough and Windsor, communities we have proudly served since 1987.

More and more people are living with life-limiting conditions and need specialist care like ours to

help them have the best quality of life, to the end of life.

Our care, delivered at the Hospice and in people's homes, supports the physical, emotional and social needs of every patient and their loved ones.

## Did you know?

Thames Hospice needs to raise **£39,000 each day** to care for local families who need our vital support. **This care is completely free.**



Artist Submission Pack Sculpture Trail 2026

## We are a place of hope, a place for living, and creating memories

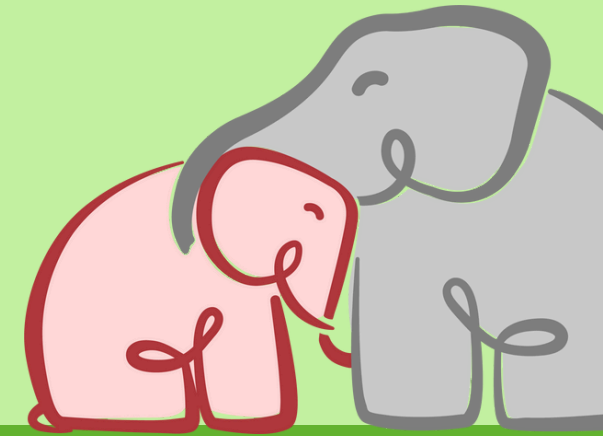
We are committed to ensuring we are always a place of hope and dedicated to providing care and support to all those who need us, when and where they need it, today and for generations to come.

## Making every moment count for local families

Thames Hospice is a charity. Our care is free at the point of use, but, unlike the NHS, we are not fully government funded. Our care is only made possible thanks to the generosity of our local community

– every donation, gift in Will, charity shop purchase and events like Trunks across the Thames make a difference.

[thameshospice.org.uk](http://thameshospice.org.uk)



# ...and Wild in Art

**Wild in Art is the leading producer of spectacular public art events that entertain, enrich, inform and leave a lasting legacy.**

It brings together businesses and creative sectors with schools and local communities through the creation of uniquely painted sculptures.

Wild in Art events have enabled over £28.4m to be raised for charitable causes, injected £4.2m into local creative communities, engaged over 1.3 million young people in learning programmes and helped millions of people of all ages to experience art in non-traditional settings.

[wildinart.co.uk](http://wildinart.co.uk)

Thames hospice





# So, how does it work?

1. Our magnificent elephant sculptures are sponsored by local businesses, groups, educational institutions, and individuals.
2. This is where you come in! Talented artists unleash their creativity, transforming each elephant into a captivating work of art, bursting with unique design and personality.
3. Throughout July–September 2026, a majestic herd of these stunning sculptures will thunder through the streets, parks, and public spaces of Slough and Windsor, creating an unforgettable experience for all.
4. The grand finale? A thrilling auction where each elephant will be celebrated and sold, raising vital funds for the Hospice.

## Event Timeline

### 31 October 2025 Submission deadline

Deadline for artists to submit designs

### 22 May 2025 Launch event

Official launch and call out to artists to submit designs

### February–April 2026 Sculptures decorated

Sculptures allocated and decorated by artists

### January 2026 Artist design selection

Artist submissions are shortlisted and sponsors choose their design

### July–September 2026 Trunks across the Thames trail goes live

Elephant sculptures are displayed across **Slough and Windsor**

### September 2026 Farewell event

Last chance to see the herd of elephants all together before the big auction

### October 2026 The **BIG** auction

The elephants march into their new homes and all monies raised head to **Thames Hospice**





# Reasons to be part of...

## TRUNKS ACROSS THE THAMES



Alongside supporting Thames Hospice, this is our opportunity to support you by elevating your creativity and awareness within our community.

### As a Trunks artist, you'll:



#### Receive £1,000

Artist commission on completion of your painted sculpture, covering associated costs



#### Showcase your work

Your design on one of the 30-35 large elephants will be seen by thousands across the local community and from further afield visiting the trail, alongside 50 small elephants designed by schools and community groups



#### Gain creative exposure

The trail will provide a powerful platform where you will be celebrated on our website, a tailored sculpture plaque, interactive trail app, printed map, across extensive media coverage and social media content



#### Transform Slough and Windsor

Play a pivotal role in bringing both towns to life, creating an unforgettable atmosphere, a vibrant tapestry of art and community, and promoting health and wellbeing



#### Inspire multiple generations

Allow your art to engage with a diverse demographic, generating excitement, powerful conversations and lasting memories



#### Expand your network

Meet and work alongside other artists in our creative hub, as well as other local organisations



# Why an elephant?

Elephants symbolise stability, groundedness, and compassion — qualities that resonate with our values and the unwavering care our dedicated teams provide to patients and their families.

The phrase “elephant in the room” often refers to death and dying, a topic surrounded by misconceptions that paint hospices as places of sadness. We are continually working to change the narrative, believing open conversations about end-of-life care are essential for healing and truly living. We create a safe, supportive space — a place of hope — where these conversations happen openly, without fear.

**Much like a herd of elephants**, known for their strong family bonds and unwavering support, our team compassionately embraces everyone who comes into our care. We envelop patients and their families in a warm blanket of support, offering outstanding clinical, emotional, spiritual, and pastoral care.

**A ‘memory’ is the beautiful name given to a herd of elephants.** We are dedicated to creating lasting memories and envision our Trunks across the Thames trail forming a lasting memory for Slough and Windsor.



## Sculpture Dimensions

**Height:** 1600mm  
**Length:** 2200mm  
**Width:** 800mm  
**Weight:** 40kg

Our sculptures have been purposefully designed to be an accurate 3D blank canvas to enable you to create your own unique work of art.

The sculpture is constructed primarily of glass-reinforced plastic (GRP) and is finished with a white primer so it is ready to paint.

# Design Guidelines



- You may submit up to two sculpture designs.
- When planning your designs, please make sure they are appropriate for public display, bearing in mind there will be a broad audience of all ages.
- Designs that are overtly religious, political or sexual in nature will not be accepted. Corporate logos and advertising are not allowed.
- We cannot accept designs that which infringe on third part intellectual property, i.e. recognisable brands, logos, personalities or characters.
- Artists may alter the basic sculpture shape but, if doing so, must ensure the finished work remains structurally intact. It is recommended that only artists experienced in working with fibreglass submit designs that use this process.
- Remember the public will touch and interact with your sculpture! Therefore any attachments must be robust and able to withstand this handling (including, potentially, the weight of an adult), not be likely to cause injury and must be durable in an outside environment.
- When placed on the streets, each sculpture is bolted to a base using fixings. Artists are requested to keep the base area clear of any attachments.
- A painting space will be provided for you to create your design. Should you wish to work in your own studio, this can be arranged but may be subject to additional cost or deduction from your agreed fee. Please be aware of the size of the sculpture when considering this option.
- While we welcome all art forms, experience has taught us that collage and/or sticking paper or paper-based products onto the sculpture has not proven as effective as painting or mosaics. Please consider this before submitting your design and be aware that the large sculptures will be positioned outside for 10 weeks, exposed to the British weather.
- Artist materials are not provided. The use of artist grade acrylic, emulsion or spray paints are recommended. To complete your sculpture, it must be finished with a specialist varnish which will be provided by Thames Hospice.
- Artists will not be responsible for placing their sculptures on the streets or collecting them at the end of the trail. Where possible we will offer original artists the opportunity to fix or make repairs post trail, but if this is not practical we will engage the services of a suitably experienced maintenance artist.

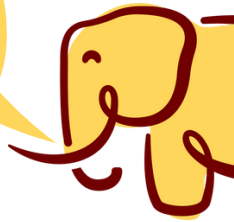
# How to get involved

To submit your ele-phantastic design, please complete this submission form, as well as your proposed design on the templates provided.

Designs must be in PDF, JPG or PNG format and high resolution. Attachments must not exceed a file size of 2MB.

We are unable to return any materials submitted.

Submit your design by midnight on **31 October 2025!**



Email your design file(s) to [a.carter@thameshospice.org.uk](mailto:a.carter@thameshospice.org.uk)

Please put 'Artist Submission' as the email subject line.

## Submission Form

First name:

Last name:

Title:

Date of birth:

Email address:

Telephone number:

Website:

We would also like to contact you about Thames Hospice, including events and fundraising. To be contacted by **email** in this way, tick here:

☐

Address line 1:

Address line 2:

City/town:

County:

Post code:

Social media handles:



## Artwork

Proposed Artwork Title:

Please provide a brief description of your design concept and inspiration. This will be used on the website, sculpture plaque and promotional material. (40–80 words max)

Please provide a brief description about yourself and your work in the third person. This will be used on the website, sculpture plaque and promotional material. (40–80 words max)

### Production

Your proposed materials (type of paint and any other materials you intend to use when decorating your sculpture):

Are you available to work on your sculpture between February – April 2026? Please state your availability if you are not available for the whole period.

Where do you intend to paint your sculpture?

Shared painting space:

☐

Your own studio/location\*:

☐

\*Please see note 17 in Terms and Conditions

## Acknowledgement

By signing this application, I agree to all of the terms and conditions stated in this pack. I certify that all statements made in this application are true to the best of my knowledge. I acknowledge that Thames Hospice or Wild in Art are not liable for damage or loss of materials submitted.

Full name:

Signature:

Date of signature:

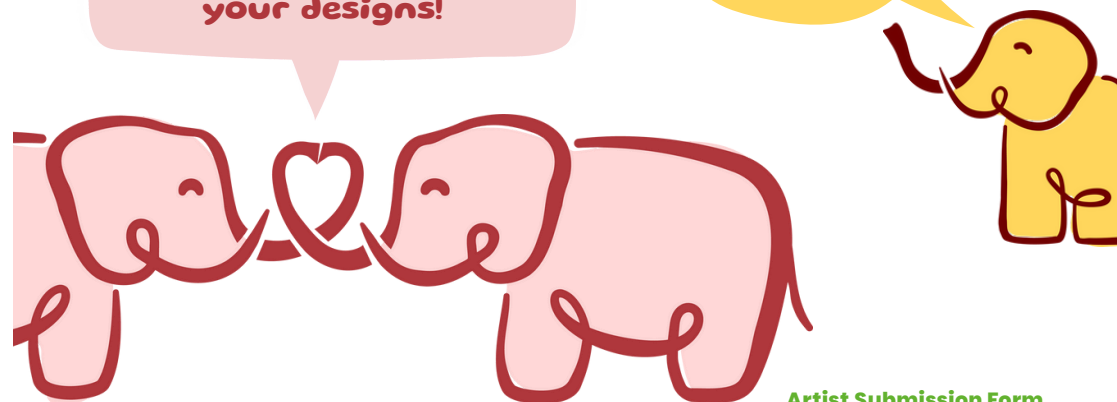
**Please submit your design(s)  
by midnight on 31 October 2025**

**By email:** [a.carter@thameshospice.org.uk](mailto:a.carter@thameshospice.org.uk)

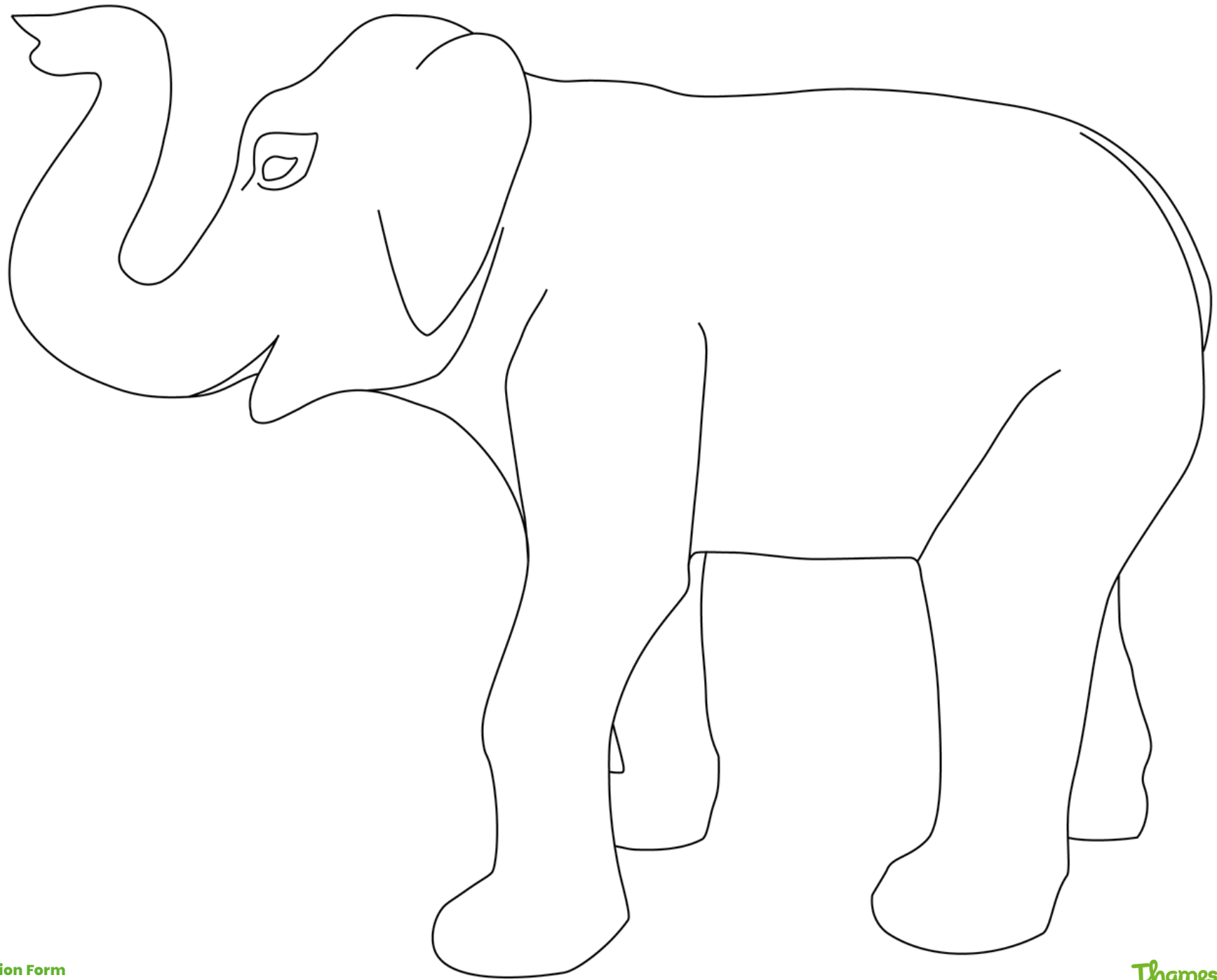
Please put 'Artist Submission' as the email subject line.

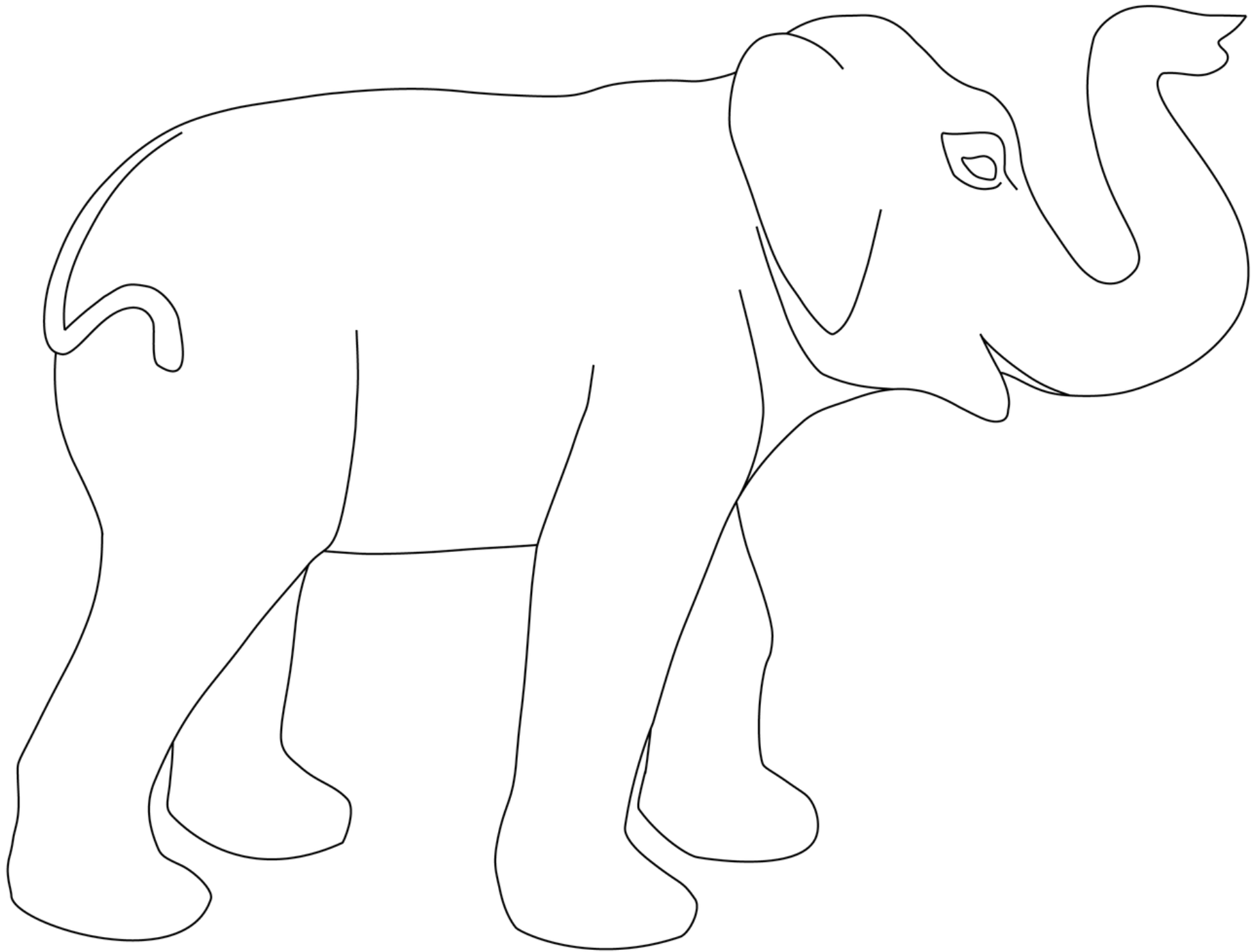
**THANK YOU!**  
We can't wait to see  
your designs!

**Need help?**  
Find tips on  
how to  
complete this  
form [here!](#)



Artist Submission Form







# Terms & Conditions

## Eligibility

1. The project is open to all artists, amateur or professional.
2. You must be aged 18 or over and living in the UK.
3. All terms and conditions in this application form a part of the agreement between you, Thames Hospice, and Wild In Art in connection with Trunks Across The Thames. By submitting your work you are agreeing to be bound by all terms and conditions in this application form.

## Design Submission

4. You may submit up to two applications.
5. You must be the sole author and owner of all intellectual property rights of the work entered, or if the work is not your own in full, you must have sole permission in writing from the copyright owner/s to use their work. Source material or proof of permission in use of another person's work must be made available on request by the selection panel. Thames Hospice and/or Wild In Art do not accept liability in the publication of any reproduced art.
6. The design must represent a piece of work that you have the ability to reproduce on a 3D sculpture.
7. Any additions or modifications to the sculpture must be sufficiently strong to maintain structural integrity of the sculpture and must not cause injury.
8. To enter, the work must be received by the closing date of midnight on 31 October 2025. All entries must be accompanied by a completed artist submission form.
9. No allowances will be made for work that arrives later than the deadline.
10. By completing the artist submission form and submitting your designs, you consent that all data provided by you may be used by Thames Hospice and/or Wild In Art for marketing, communications and evaluation purposes unless you opt out in writing. We don't and never will sell or pass on any of your details to another organisation for them to use for their own purposes. We may, however, use third party organisations to help deliver services on our behalf, for example, distributing our email newsletters or feedback questionnaires, or managing participant lists for our events. At all times we will ensure that we look after your details responsibly and that any organisations using your information on our behalf do the same. For more information, please see the Thames Hospice Privacy Policy at [www.thameshospice.org.uk/privacy-and-cookie-statements/](http://www.thameshospice.org.uk/privacy-and-cookie-statements/)
11. You consent to the use of your work, name and photograph in any promotional material carried out by Thames Hospice and/or Wild In Art without any further compensation.
12. By entering your work for consideration to be selected to be used in the event and for eligibility for payment of the honorarium you warrant that you have all required rights and consents to submit the work and allow Thames Hospice and/or Wild In Art to use the work in connection with Trunks Across The Thames. You also agree to grant an irrevocable royalty-free licence to Thames Hospice and Wild In Art and to use the completed work for the purposes described elsewhere connected with the event.

## Commissioning of Designs

13. Your work will be reviewed and shortlisted by Thames Hospice and a panel of suitably experienced and impartial professionals including a representative from Wild In Art, prior to being shown to the event sponsors.
14. Work will be commissioned following selection and or confirmation by the event sponsors. The decision on all matters relating to the work selected to be used is final. No further correspondence will be entered in to.
15. Upon commissioning, Thames Hospice will enter a separate service level agreement with you to include an agreed schedule and the terms and conditions of engagement.

## Production

16. Thames Hospice will provide the sculpture at no charge to you. Cost of materials is your responsibility except for varnish, which will be provided. Unless otherwise agreed by both parties in writing.
17. If you are not able to paint the sculpture in a provided painting space, we will work with you in order to co-ordinate and manage the safe and secure transportation of the sculpture in the most cost-effective way. Artists may be expected to pay all or a proportion of delivery charges to and from the event storage. This is at the discretion of the event partner, and should be finalised before any commission is confirmed. In the unlikely event that we cannot provide a painting space, the costs of transportation of the sculpture will be discussed on a case-by-case basis.
18. You will provide a list of artist materials – specifically paint, brand and colours used in the application on the sculpture. Where possible we encourage you to put together an onward care package including left overs of any paints used that might help the maintenance team with repairs.
19. Thames Hospice reserves the right to withhold any fee payable to you in connection with the event if in its sole opinion the quality of the finished work provided falls below that which can be reasonably expected for public display and/or is substantially different from the design submitted. If a third party artist is required to bring your sculpture up to the required quality standard, their fee/day rate may be deducted from your commission fee.
20. The sculpture remains at all times the property of Thames Hospice and must be returned in good order.

## Payment, Copyright and Licensing

21. If the sculpture is returned unfinished by you or deemed irreparable due to damage while in your possession, you shall be charged the full replacement cost of said sculpture.
22. Thames Hospice will award commissioned artists with an honorarium of £1,000 +VAT (if applicable). This will be paid on completion of the finished artwork, subject to sign off, and all relevant paperwork. Payment will be made within 28 working days of receipt of invoice. By submitting this application you confirm that you are responsible for all your own tax and national insurance contributions relating to the honorarium and reporting thereof. Thames Hospice will consider, at our discretion, staged payments on a case by case basis.
23. Copyright and all other IP Rights in the design belong to and remain with the artist. However, subject to Thames Hospice paying all amounts due to the artist under any final commissioning contract, the artist grants to Thames Hospice and Wild In Art an irrevocable royalty free licence to use the completed artwork for purposes in connection with the event, Trunks Across The Thames.
24. Thames Hospice and Wild In Art may from time to time produce facsimiles of the completed sculpture in both 2D and 3D form, excluding figurines. For the avoidance of doubt, any agreement reached in connection with any facsimile of your design should include any consideration to be paid to you by Thames Hospice and require transfer of rights to Thames Hospice.
25. Subject at all times to your agreement, Thames Hospice and Wild In Art may produce a figurine of the completed sculpture as part of the event merchandise. If your elephant is selected to be a figurine, this will be subject to a separate figurine contract and include a royalty fee.

## Auction

26. Following the event, the sculpture will be auctioned to raise money for Thames Hospice. Thames Hospice will, where practicable, try to offer artists first refusal to undertake repair and maintenance work should the applicable sculpture require it, but in most instances suitably experienced local Artists will be commissioned separately by Thames Hospice to complete any agreed maintenance and repairs.

# Get in touch!

If you would like to find out more about how you can get involved with this amazing event, please contact the Thames Hospice Trunks across the Thames team.

**Ele-phon us on**  
01753 842121

or

**Tusk us a message**

**Amie Carter, Art Coordinator**  
a.carter@thameshospice.org.uk

**Jess Seymour, Project Manager**  
j.seymour@thameshospice.org.uk

**trunksacrossthethames.co.uk**  
@trunksacrossthethames  
#trunksxthames



Amie, Hope and Miles